

# Mooble House

# Tiny House

---

Your Home in Nature



**mooble**  
**house**





**mooble  
house**

# Our Manifest

Mooble House,

- Connects people with nature.
- Encourages people to be more nature friendly.
- Produced by considering the needs, habits and wishes of the user and is open to continuous development.
- Aims to provide a comfortable experience to its users with the principle of sustainability at every step from design to production, from material procurement to furniture selection.
- Produced with durable, long-lasting building materials, taking into account the difficult conditions of nature. All components are of high quality standards.
- User comfort and functional design is the priority. Comfort conditions are created based on empathy and experience.
- Design and production process is realized in accordance with International norms.
- A lean and minimalist design philosophy has been adopted.
- Users can live in high comfort standards regardless of location and seasons.









# About Us

- We have the capacity to produce 4,000 tiny houses per year with our 11,000 m<sup>2</sup> closed and 20,000 m<sup>2</sup> open production area.
- We design and manufacture Mooble House in accordance with industry principles, with our team which consists of different design and engineering disciplines.
- Mooble House maintains its production under its own O2 Europe Type Approval Certification.
- Mooble House products are produced in accordance with the 2018/858 Trailer regulations and are suitable for towing on all European roads.



Çevre Yönetim Sistemi



İş Sağlığı ve Güvenliği Sistemi



Kalite Yönetim Sistemi



Çevresel Ürün Deklarasyonu



Yatırım Çekim Yeterlilik Belgesi



AB Standartları Yeterlilik Belgesi





# Your Home in Nature



**Comfort**



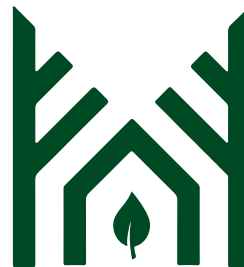
**Mobility**



**All Seasons Usage**



**Mutual Usage**



**Harmony with Nature**



**Compliance with  
Regulations**





Product in the Image: Mo.2 600



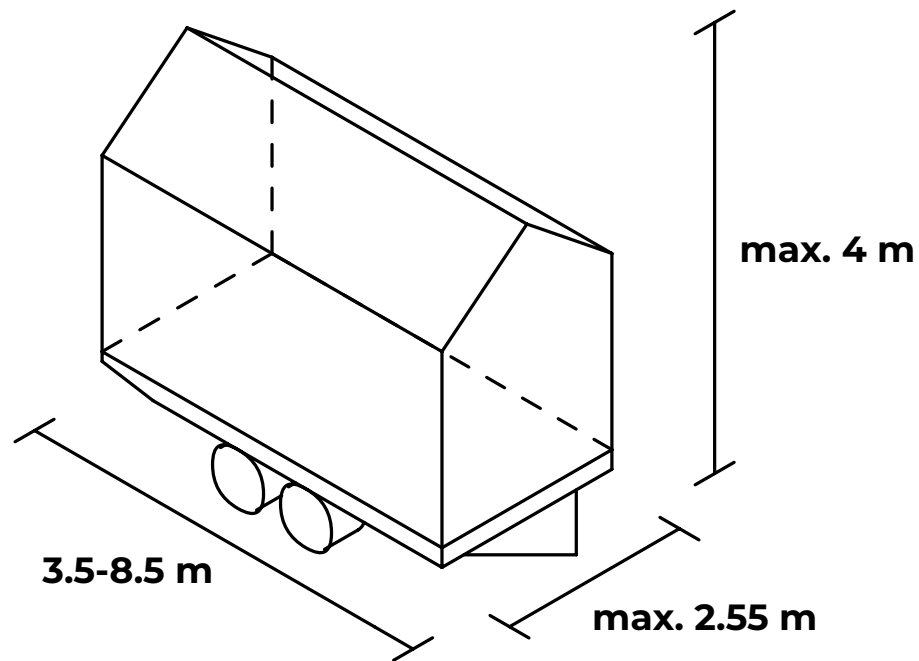
Product in the Image: Mo.2 600



Product in the Image: Mo.2 600

# Models

Mooble House products are vehicles with license and plate, thus, they are produced in compliance with road regulations.



+

---

max. 3500 kg







# Mo.1

## Mo.1 635

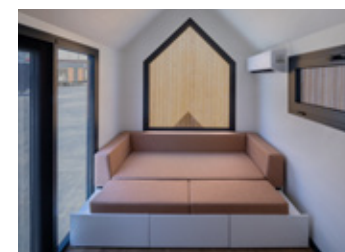
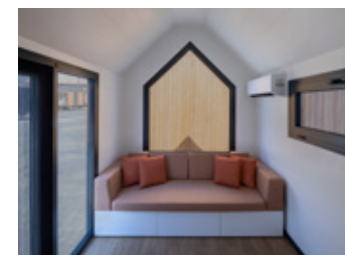
Length: **6.35 m**    Width: **2.55 m**    Capacity: **4**

### General Information

Mo.1 635 is a Mooble House model that combines living and sleeping areas with an ergonomic loft within a single volume.

With the loft floor located above the kitchen and wet area, you can enjoy the sight of the blue sky. This model comes with a length of 6.35 meters, suitable for the use of 4 person, and offers a functional and compact solution to its users.

- AL-KO trailer components.
- Hot deep galvanized steel superstructure and trailer.
- Birch Marine Plywood interior cladding and furniture.
- Fine heat insulation.
- Coat coil aluminium clamp cladding on roof and exterior walls.
- Thermowood Finland Pine exterior wall claddings.
- Heat insulated aluminium window frames.
- Residential type mechanical equipments.
- Halogen-free 220 Volt electrical fittings.



Mo.1 560



Mo.1 560 Loft



Mo.1 635



Mo.1 635 Loft







Mo.I 650



Mo.I 650 Loft



# Mo.2

## Mo.2 560

Length: **5.60 m**    Width: **2.55 m**    Capacity: **2**

### General Information

Mo.2 560 is a Mooble House model where its kitchen and living area are built together into a single volume without any wall separation. By this means, users can enjoy the sense of space. This model comes with a length of 5.60 meters long and suitable for two person usage.

- AL-KO trailer components.
- Hot deep galvanized steel superstructure and trailer.
- Birch Marine Plywood interior cladding and furniture.
- Fine heat insulation.
- Coat coil aluminium clamp cladding on roof and exterior walls.
- Thermowood Finland Pine exterior wall claddings.
- Heat insulated aluminium window frames.
- Residential type mechanical equipments.
- Halogen-free 220 Volt electrical fittings.



Mo.2 350



Mo.2 450



Mo.2 560





# Mo.2

## Mo.2 560V

Length: **5.60 m**    Width: **2.55 m**    Capacity: **2**

### General Information

Mo.2 560V is a Mooble House model where the entrance is through the narrow side. Thanks to its interior patio, the product is smoothly integrated with nature. This model comes with a length of 5.60 meters long and suitable for two person usage.

- AL-KO trailer components.
- Hot deep galvanized steel superstructure and trailer.
- Birch Marine Plywood interior cladding and furniture.
- Fine heat insulation.
- Coat coil aluminium clamp cladding on roof and exterior walls.
- Thermowood Finland Pine exterior wall claddings.
- Heat insulated aluminium window frames.
- Residential type mechanical equipments.
- Halogen-free 220 Volt electrical fittings.



Mo.2 560V



Mo.2 700V



# Mo.2

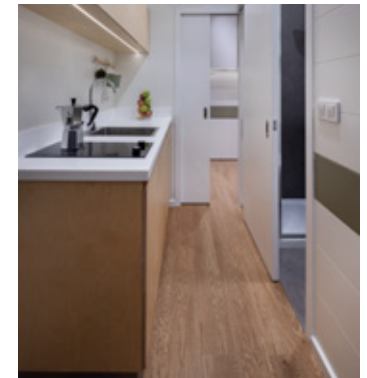
## Mo.2 675

Length: **6.75 m**    Width: **2.55 m**    Capacity: **4**

### General Information

Mo.2 675 is a Mooble House model in which sleeping and living areas are designed as separate spaces. The continuity of the furniture and its ability to transform into different functions are adopted in the design philosophy. Thanks to the folding wall bed in the sleeping area, a new space is created for various use purposes when not in use. The furniture, which is used as a fixed desk in the living area, also contains storage areas and turns into a dining table by opening up. This model is 6.75 meters long and is suitable for use by 4 person.

- AL-KO trailer components.
- Hot deep galvanized steel superstructure and trailer.
- Birch Marine Plywood interior cladding and furniture.
- Fine heat insulation.
- Coat coil aluminium clamp cladding on roof.
- Thermowood Finland Pine exterior wall claddings.
- Heat insulated aluminium window frames.
- Residential type mechanical equipments.
- Halogen-free 220 Volt electrical fittings.



### Mo.2 675







# Mo.2

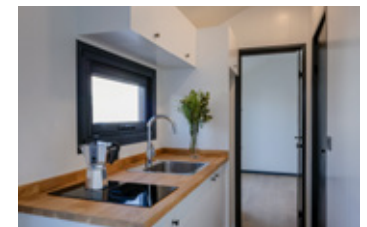
## Mo.2 800

Length: **8.00 m.** Width: **2.55 m.** Capacity: **4**

### General Information

Mo.2 800 is the most optimal double room Mooble House model. Exterior cladding is predominantly metal on long sides and wood on narrow sides. The kitchen and bathroom, which are located in the center of the product, creates a corridor. The sleeping and living areas are separated from each other which makes this model the most efficient model for families with 4 people. This 8 meters long model is suitable for use by 4 people.

- AL-KO trailer components.
- Hot deep galvanized steel superstructure and trailer.
- Birch Marine Plywood interior cladding and furniture.
- Fine heat insulation.
- Coat coil aluminium clamp cladding on roof.
- Thermowood Finland Pine exterior wall claddings.
- Heat insulated aluminium window frames.
- Residential type mechanical equipments.
- Halogen-free 220 Volt electrical fittings.



Mo.2 700



Mo.2 800





# Mo.2

## Mo.2 850T

Length: **8.50 m.** Width: **2.55 m.** Capacity: **4**

### General Information

Mo.2 850T is a Mooble House model which is preferred for commercial use. It provides two different living spaces in the same vehicle. In other words, two different hotel rooms are presented on the same module. It also offers a solution for two different families who often want to spend time together. This model comes with a length of 8.50 meters long and suitable for four person usage.

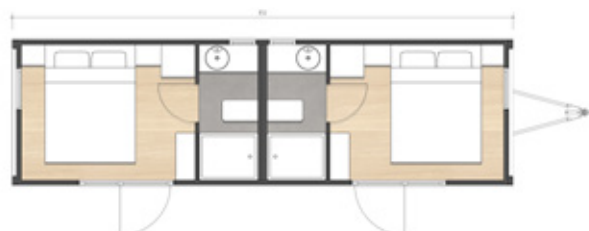
- AL-KO trailer components.
- Hot deep galvanized steel superstructure and trailer.
- Birch Marine Plywood interior cladding and furniture.
- Fine heat insulation.
- Coat coil aluminium clamp cladding on roof and exterior walls.
- Thermowood Finland Pine exterior wall claddings.
- Heat insulated aluminium window frames.
- Residential type mechanical equipments.
- Halogen-free 220 Volt electrical fittings.



Mo.2 800



Mo.2 850T



# Mo.3

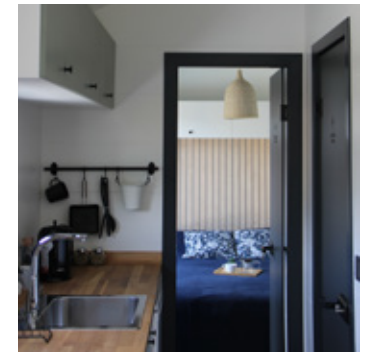
## Mo.3 800

Length: **8.00 m** Width: **2.55 m** Capacity: **4**

### General Information

Mo.3 800 is a Mooble House model which comes with a saddle roof and a wooden exterior design. In the current plan setup, where kitchen and bathroom meet, there is an independent bedroom at one end of the product and a living area at the other end. It offers different plan alternatives that users can select the most suitable for them. This model comes with a length of 8 meters long and suitable for four person usage.

- AL-KO trailer components.
- Hot deep galvanized steel superstructure and trailer.
- Birch Marine Plywood interior cladding and furniture.
- Fine heat insulation.
- Coat coil aluminium clamp cladding on roof.
- Thermowood Finland Pine exterior wall claddings.
- Heat insulated aluminium window frames.
- Residential type mechanical equipments.
- Halogen-free 220 Volt electrical fittings.



Mo.3 450



Mo.3 560



Mo.3 560 Loft



Mo.3 800







# Mo.4

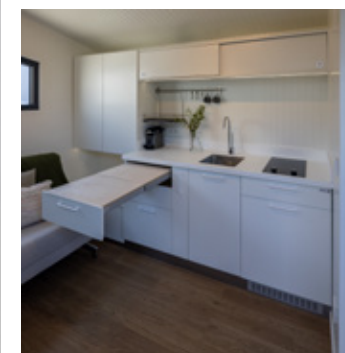
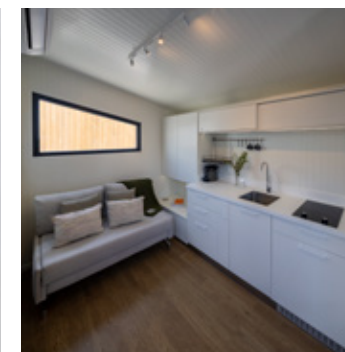
## Mo.4 450 Home Office

Length: **4.50 m.** Width: **2.55 m.** Capacity: **2**

### General Information

Mo.4 450 Home Office is a Mooble House model that combines working and living space into a compact product. Thanks to the smart furniture design, maximum functionality has been achieved in a minimum space usage. Kitchen drawers can be also used as a counter and a dining table. There are many hidden storage areas in the product. Particularly designed working space makes it possible to be in touch with nature. This model is 4.5 meters long and is suitable for use by 2 person.

- AL-KO trailer components.
- Hot deep galvanized steel superstructure and trailer.
- Birch Marine Plywood interior cladding and furniture.
- Fine heat insulation.
- Coat coil aluminium clamp cladding on roof and exterior walls.
- Thermowood Finland Pine exterior wall claddings.
- Heat insulated aluminium window frames.
- Residential type mechanical equipments.
- Halogen-free 220 Volt electrical fittings.



### Mo.4 450







# Mo.4

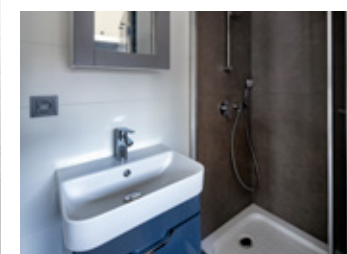
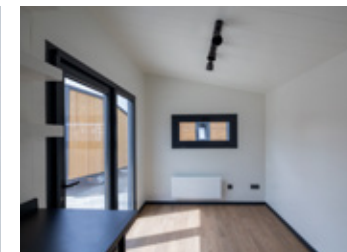
## Mo.4 800

Length: **8.00 m**    Width: **2.55 m**    Capacity: **4**

### General Information

Mo.4 800 is a Mooble House model with a single-sided sloping roof and a wooden exterior design. Only the rear facade and roof consists of metal cladding, every other facade is wooden cladded. The kitchen and bathroom volumes, which are located in the middle of this product, works as a separator between the living area and the sleeping area. This model comes with a length of 8 meters long and suitable for four person usage.

- AL-KO trailer components.
- Hot deep galvanized steel superstructure and trailer.
- Birch Marine Plywood interior cladding and furniture.
- Fine heat insulation.
- Coat coil aluminium clamp cladding on roof and exterior walls.
- Thermowood Finland Pine exterior wall claddings.
- Heat insulated aluminium window frames.
- Residential type mechanical equipments.
- Halogen-free 220 Volt electrical fittings.



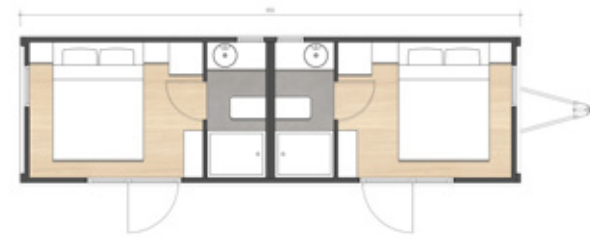
Mo.4 450



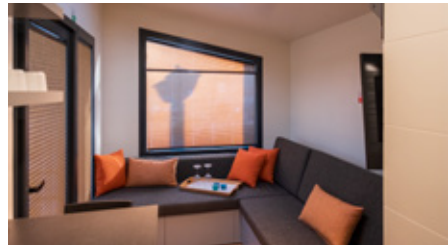
Mo.4 800



Mo.4 850T







# Mo.5

## Mo.5 400

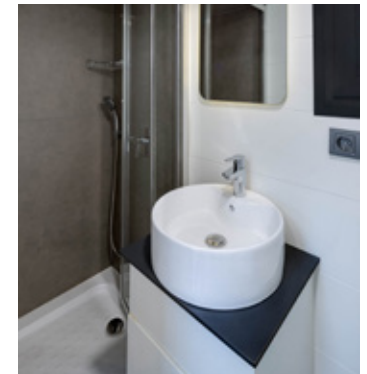
Length: **4 m**      Width: **2.55 m**      Capacity: **4**

### General Information

Mo.5 400 is a Mooble House model which is designed for the users who seek for a compact solution.

It offers a solution for users who want to be mobile often. Thanks to its functional design, four people can be accommodated in a minimalistic four meter product.

- AL-KO trailer components.
- Hot deep galvanized steel superstructure and trailer.
- Birch Marine Plywood interior cladding and furniture.
- Fine heat insulation.
- Coat coil aluminium clamp cladding on roof and exterior walls.
- Thermowood Finland Pine exterior wall claddings.
- Heat insulated aluminium window frames.
- Residential type mechanical equipments.
- Halogen-free 220 Volt electrical fittings.



Mo.5 400



Mo.5 400 Loft



Mo.5 450



Mo.5 450 Loft







featuring

# Mo.6 Off-Grid

Length: **4.50 m**    Width: **2.55 m**    Capacity: **3**

## General Information

Featuring Mooble House Mo.6 450 Off-Grid model for those who seek adventure without being tied down on a grid.

A fully independent product that is self-sufficient courtesy to its design and equipment.



Mo.6 450

Mo.6 450 Loft









# Mooble House Commercial

Mooble House models are not only suitable for individual use but also for commercial use. Moreover, you can start your business in a short time without dealing with long-term and costly processes such as infrastructure and construction.

For your business, you can choose among the existing models of Mooble House and place your bulk order, or you can request customizations according to the needs of your business and bring your unique project to life.

Courtesy of Mooble House, you can meet all your commercial unit needs such as hotels, dorms, offices, cafes, shops, etc. in a short time, and you can do your business anywhere in the world with high quality and comfort standards.







# Technical

Technical and Finishing Equipment	Highline
AL-KO Tandem Torsion Axle Set*	S
AL-KO Coupling, Brake, Rim, Tire, Jack Set (4 Pcs.)	S
Hot Dip Galvanized Performance Steel Chassis	S
Hot Dip Galvanized Performance Steel Superstructure Construction	S
7 Pin Trailer Socket and LED Electrical Signaling Components	S
Roof and Facade Heat Insulation	S
Floor Heat Insulation	S
Coat Coil Aluminum Clamp Roof Coverings (RAL7016)	S
Dupont Tyvek Solid Breathable Insulation Coating	S
Thermowood Finland Pine Exterior Wall Coverings	S
Tempered Insulated Glass	S
Marine Type Natural Birch Plywood Wall and Ceiling Coverings and Furniture	S
High Abrasion Resistance Laminate Parquet	S
Compact Laminate Bathroom Door	S
*Can be varied among different products. S: Standard	

Mechanical Equipment/ON-GRID	Highline
Acrylic Shower Tray, Tempered Glass Bath Panel and Ceramic Wall and Floor Covering	S
Residential Type Classic Reservoir WC	S
Built-in Bathroom Sink with Natural Birch Plywood Cabinet	S
Residential Type Mechanical Equipment	S
Clean and Waste Water Connection Ports	S
Thermal Insulated Mechanical Ware	S
2 Eye Electric Stove and Kitchen Sink*	S
Electrical and Mechanical Infrastructure for A/C	S
Electric Mini Thermosiphon Infrastructure for Hot Water	S
*Can be varied among different products. S: Standard	

Electrical Equipment/On-Grid	Highline
Halogen Free 220 Volt Electrical Wiring	S
High Quality Residential Type Electrical Equipment	S
LED Exterior and Interior Lighting	S
*Can be varied among different products. S: Standard	



Interior Optional Equipment	Highline
Ceiling / Wall Fan	
A/C	
Thermosiphon (30 lt)	
Audio and Video System	
LVT ( Luxury Vinyl Tile) Parquet	
Oak Stair Covering	
Fireplace and Chimney Set	
Carbon Filtered Aspirator	
Standard or Mini Fridge (220 Volt)	
Washing Machine (220 Volt)	
Dish Washer (220 Volt)	
Oven (LPG/Electric)	
Microwave Oven	
Interior Wall and Roof Painting	
Birch Marine Plywood Wainscot Finishing	
Oak Kitchen Countertop	

Exterior Optional Equipment	Highline
Coat Coil Aluminium Clamp Roof and Side Wall Coverings Custom Paint	
Roof Window	
Swatter for Doors and Windows	
Swiss Pine Terrace Set (2X4 m)	
Awning (2x4 m)	
2kW Inverter Generator Set	
Satellite Antenna Set	
Alarm and CCTV	

# Compliance to International Norms

Eurocode 3, Design of steel structures part 1-3

ANSI / AISC 360-05; Load Resistance Factor Design Specification for Structural Steel. IBC, IRC

Type Approval Regulation on Motor Vehicles and Trailers (2018 / 858 / AT).

Europe Type Approval Certification


## Off-Grid


- 200 lt. Clean Water Tank, 150 lt. Grey Water Tank, 50 lt. Black Water Tank
- Discharge System for the tanks.
- 13 lt/min flowing air pressure system.
- LPG powered oven.
- Halogen Free 12 Volt and 220 Volt electrical system.
- CBE PC 380 Digital Control Panel and 22A redresser set. CBE sockets and switches.










 **Head Office:** İbrahim Karaoğlanoğlu Caddesi, No:71-73 Arena Ofis Seyrantepe / Kağıthane / İstanbul / Turkey

 +90 212 212 06 74

 +90 531 672 76 81

 [www.mooblehouse.com](http://www.mooblehouse.com)

 [info@mooblehouse.com](mailto:info@mooblehouse.com)

 **Factory:** Çerkezköy Organize Sanayi Bölgesi, Gazi Mustafa Kemal Paşa Mah. Atatürk Cad. No:134 Çerkezköy 59500 Tekirdağ / Turkey

 [mooblehouse](https://www.instagram.com/mooblehouse)

 [Mooble House Tiny House](https://www.youtube.com/MoobleHouseTinyHouse)

 [mooblehouse](https://www.linkedin.com/company/mooblehouse)